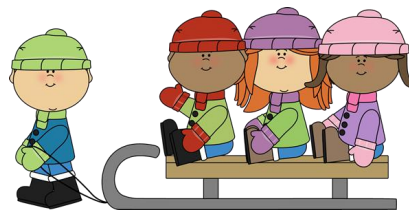


# The Ahoooga News



January 2020



This time of the year the Editor's files are in need of replenishing...  
Please take a nice photo of your Model A and it might be used on our club newsletter's front page!  
Include any interesting history or story about your car - how long you've had it, where you got it,  
did you restore it, does it have a name - that sort of thing. Like I've said before,

"Every Model A has a story to tell!"

I also need tech articles and Model a related articles.

## BEAVER CHAPTER MAFCA PORTLAND, OREGON

The Beaver Chapter is a non-profit organization dedicated to the restoration and preservation of the Model A Ford automobile. Membership is open to all people with a sincere interest. Members will be asked to volunteer a minimum of three hours annually to fill the club duty roster of the Portland Swap Meet.

The Beaver Chapter memberships commence on January 1st or on the date paid and expires on December 31st.

A \$5.00 late fee is charged after January 1<sup>st</sup> for renewals.



New memberships received after July 1st are valid for the following year.

Beaver Chapter dues are \$10.00 for a member plus \$1.00 for a spouse member.

**Make check payable to Beaver Chapter, submit signed membership application to the Membership Coordinator at the meetings or send them to:**

**Rayburn Mitchell at 23101 SE Firwood Rd. Sandy, OR 97055.**

By-laws Article III, Section 2 states: "Membership in the national club (MAFCA) shall be a prerequisite for all active members of the Beaver Chapter."

MAFCA dues are \$50.00. Mail to: MAFCA, 250 S. Cypress Ave., La Habra, CA 90631.

### CLUB OFFICERS FOR 2020

**President: Lynn Sondenaa 503.781.9741**

**Vice President: Tom Winterrowd 503.263.2696**

**Secretary: Kirk Metteer 503.910.4900**

**Treasurer: Mike Worthington 503.788.5965**

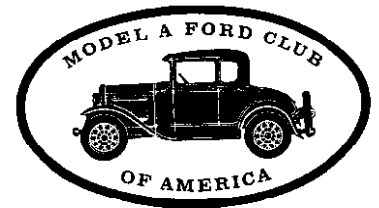
**Member at Large: Debbie Dutton 503.706.4843**

**Editor: Jeanie Adair 503.655.3189**

**Membership Coordinator: Rayburn Mitchell 503.668.0872**

**Sargent at Arms: Rene Metteer 503.910.6805**

**Past President: Chris Irwin 503.538.5227**



### CLUB REPRESENTATIVES FOR 2020

NW Regional Group Reps: David Adair and Tom Winterrowd; Portland Swap Meet: Mike Worthington and Debbie Dutton; Historian: Lloyd Dilbeck; Sunshine: Brenda Caseday; Raffle Prizes: Lori Symank; Refreshments: Mary McConnell; MAFCA Chapter News: Tom Irwin.

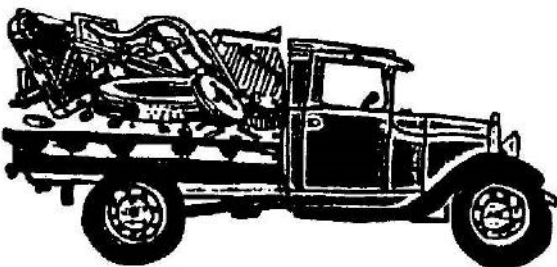
Articles and contributions for the newsletter is encouraged and will be used as space and time permits.

**The deadline is the weekend following the meeting unless announced otherwise.**

Correspondence should be sent directly to the Editor: [jadadaja@msn.com](mailto:jadadaja@msn.com) or mailed to 895 Hazelwood Dr. Oregon City, OR 97045. Other newsletters may reprint article as long as credit is given to the author and *The Ahooga News*.

**Beaver Chapter Web Site:** <http://beaverchapter.shutterfly.com>

### HEAR IT COMES... ANOTHER YEAR!



### DO YOU LIKE THE REFRESHMENTS AT THE MEETING?

Who is bringing them for the January meeting? See page 12...

### WHATS NEW?

Do you know what **BKBN** means?  
There are changes to the  
Policy and Procedures - see page 8.

Continue reading the newsletter  
and you will find out what's new...







## PRESIDENTS COLUMN

Fellow club members, we are embarking on the 2020 Model A year. Your new Board has been working hard to make this year exciting with many new things. As your new President I would like to implement the BKBN philosophy, which is *Be Kind & Be Nice*.

For example, during meetings put your cell phones in airplane mode. When a fellow Board member or club member is talking, be respectful by not having side-bar conversations. Next, if you were not satisfied with something (such as a tour or the place we ate) please do not criticize. It takes a lot of hard work to plan a tour and make reservations at a restaurant.

My grandfather told me many times if you do not have anything nice to say, then do not say anything at all. That was a good life lesson for me!

I have only been in office a month and have had many tasks to take care of to keep the club functioning. Mike Worthington has been working hard on the budget and treasures report. Tom Winterrowd has been busy planning some tours to get the year started off. Jeanie Adair never gets any time off as editor. She works hard to put together an award winning newsletter! Rayburn Mitchell is hard at work compiling the 2020 roster. Debbie Dutton is putting in time (as well as Mike) on the Portland Swap Meet. (Remember, the swap meet is our income to do fun events, so sign up to do a duty so our club will continue to have funds.) Kirk Metteer is busy sharpening his pencils and compiling paper ready to take club notes. He is also working with Tom on tours. Rene Metter is coming up with ideas on how to help implement the **BKBN** philosophy. And last, but not least, is Chris Irwin who has the hardest job of all, trying to point me in the right direction and keeping me on course. Good luck with that one, Chris!

I will close my column by giving a "shout out" to three of our Beaver members. Back in September we had the past President's Tour to the coast. Richard & Bonnie Starkweather did an outstanding job of organizing and conducting the tour. Second, on that tour we had a rainy day, so my shout out goes to Andrew & JoAnn Jackman who drove their 1929 roadster. If you were in modern iron you should feel guilty for not driving your Model A as Andrew showed us how it is done! My third shout out goes to Bill & Mary Jabs who received the Harris Society award for Bill's extensive service to the College of Engineering and OSU Foundation boards. Now that's a great Beaver!

**Lynn Sondenaa, President**

### Cruising . . .

Dan Brentano took his mom to lunch and cruised the backroads afterwards. They are in the family 1930 Model A Coupe.

"We all have our time machines, don't we.

Those that take us back are memories

And those that carry us forward are dreams."

H. G. Wells



## ***Jim's Technical Tip by Jim Cannon from the Cut-Out Auburn A's 3/2019***

### **Oil vs Grease—What's the difference**

We pour oil into the engine, transmission,, differential and steering gear box. We use grease on the chassis, in all the grease fittings, and we pack our wheel bearings with grease. Have you ever wondered what the difference is between these two? I have.

Oil is a slippery liquid at room temperature that provides a film between parts that are sliding or pressing quite hard against each other while in use. Higher viscosity oil will allow for higher pressure between parts before the oil film gets pressed out and you lose the protection between the parts. It also helps with cooling inside an engine while it runs.

One characteristic of oil that you are all familiar with is that it does not mix with water, because it is made up of organic molecules that don't interact with polar water molecules. They will usually mix with other oils and solvents. The oil molecules may be distilled from the mix of hydrocarbons found in crude oil, or they may be formed and built up, piece by piece, in a chemical reaction with catalysts (which we call synthetic oil). Synthetic oil molecules tend to be more uniform (all the same) than conventional mineral oils, because they were each built from the same building blocks. That improves their performance in many applications.

Grease is a lubricant that consists of about 85% base oil, as above, about 15% thickener that keeps the grease in a semisolid state, and various additives for things like corrosion prevention. The base oil can be a vegetable oil (safe to use around food), conventional mineral oil from crude, or a synthetic oil. The thickeners are actually some form of soap, made with things like lithium, calcium, or aluminum. Unlike oil, grease does not "flow": that's why it is not recommended in our steering gear box. We want the oil to run down into all the bushings, bearing and gears.

Grease is an interesting substance. It has a high initial viscosity or thickness but as stress is applied, the viscosity decreases, approaching that of the base oil. Release the stress and it thickens again. Grease can separate over time...you've probably seen the oil part run out of a grease gun that sits. Grease can dry out and harden with age. The soap part can break down with a lot of heat, reducing how well the grease stays inside the bearing (think of front wheel bearings).

So if you can't remember when you last packed fresh grease into your front wheel bearings, you might want to go clean them and repack them this weekend. Avoid problems on the road and  
Have a Model  
A Day! Jim

### **Another Jim's Tips *Cowtown A August 2019***

When installing the small C-clip on the end of the horn rod, use an old wooden yardstick or something similar up at the steering wheel end to hold the horn button down. Slip the yardstick under the wheel on one side, go over the horn button, then gently flex the yardstick and slip the end under the steering wheel on the opposite side. The yardstick will hold the rod down while you work at the other end, pushing up on the spider against the spring and inserting the C-clip keeper.

These tech tips were "borrowed" from *The Action A Newsletter*, Phoenix club and of course Jim Cannon..



*Modèles Originaux*



## France Influenced Model A Era Fashion

French designers have long created the most renowned and coveted fashion brands in the world. Stylistically innovative and technically exceptional, the outstanding reputation of the French clothing industry can be traced as far back as the 17th century, and it is a reputation that has only continued to strengthen since.

France was highly favored for the latest fashion during the Model A era.

Paris had become a thriving fashion hub, while designs were being replicated the world over.

This simple but elegant models dress is an example of Paris influence on fashion from 1931.

The neckline scoops low with a side button closure off center. The dress has a self fabric tie belt. A double peplum placed low on the hips has a nice leaf design on it. The design is repeated on the sleeves and on the upper back of the dress (note the inset back view). Without the closure, peplum and leaf design it would be a very plain dress.

A matching green necklace, a fur piece, and a stylish 1931 hat complete the outfit. ~ Jeanie Adair

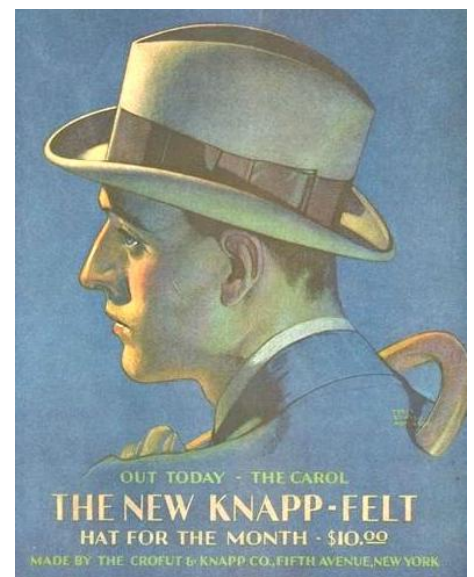
"There is a Fountain of Youth;  
It is your mind, your talents,  
the creativity you bring to your life  
and the lives of the people you love.  
When you learn to tap this source,  
you will truly have defeated age."

~ Sophia Loren



## Men's Dress Hat

This advertisement is from a *Saturday Evening Post* from 1929. Depending how dressy it is a man's felt hat could be lined with silk, have a welt-edge or not, worn brim up as pictured or turned down or just the front snapped down. A man almost always wore a hat during the Model A era. Fashion judging has very specific measurements of the crown, brim and ribbon sizes when one is being judged.



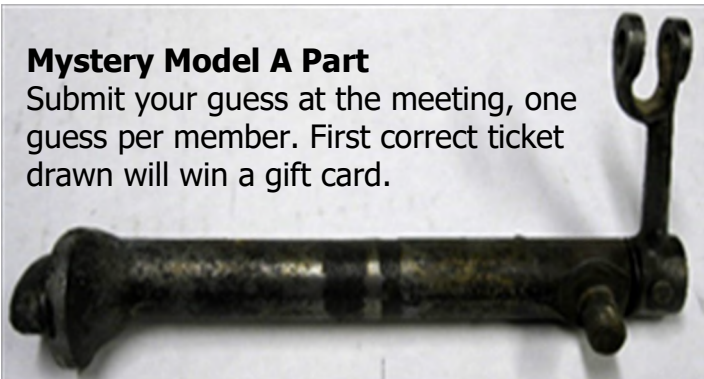


This old photo was sent to me from Mike McLaughlin. He got it from his sister and thinks it was taken in about 1942.

The Model A belonged to Mikes dad, Mickey McLaughlin. He used it for fun and occasionally to deliver mail in Lynd, Minnesota. The large airplane tires allowed him to drive over the snow drifts which were very hard. The sign above the door says "Goodyear Tires Lynd Auto Co." He took the mail carriers motto very seriously: "Neither snow, nor rain nor heat nor gloom of night stays these couriers from the swift completion of their appointed rounds."

### Mystery Model A Part

Submit your guess at the meeting, one guess per member. First correct ticket drawn will win a gift card.



**WELCOME  
NEW  
MEMBERS**

Have you met Craig Jones? He and his wife Kathleen came to the November meeting. 3106 NW Telshire Beaverton OR 97006 503.975.7541 [cjones3106@gmail.com](mailto:cjones3106@gmail.com) 1930 Coupe



Other new members: James Swartz added Tammy Winn to his listing.

Former members rejoined: Alicia Erickson 18414 NE 215th Place, Brush Prairie, WA 98606 971.221.9316 [aliciaerickson@Q.com](mailto:aliciaerickson@Q.com)

Pamela Pemberton 149 Fields Rd. Dalla, GA 30157 770.331.2570 [pamelapemberton@bellsouth.net](mailto:pamelapemberton@bellsouth.net)

**Email change:** Doug Inglis email address has changed to [inglis22@comcast.net](mailto:inglis22@comcast.net)

**January**  
*winter* *frosty*  
**COLD FUN**  
*Snowflakes*  
**HOT COCOA**  
WARM BLANKETS  
*cuddling together*  
*snowball fight*  
**MITTENS**  
*Sliding*  
JACK FROST NIPPING AT YOUR NOSE

**"Never say "no" to adventures.  
Always say "yes".  
Otherwise you'll lead a very dull life."  
~ Ian Flemming**





**You are invited to**  
**Beaver Chapter's Annual Banquet**  
**Saturday, January 18, 2020 6PM to 10PM**  
**Monarch Hotel 12566 SE 93rd Ave.**  
**Clackamas, Oregon**  
**\$30 for members, \$40 non members**  
**Make reservations by January 9th**

Menu choices are: **B** - Beef, **C** - Chicken,  
**S** - Salmon, **V** - Vegan, **P** - Pork. See menu.

Make checks payable to "Beaver Chapter" and  
 send check & reservations form to:  
 Eileen Ross at 1655 S. Elm St., Unit 6, Canby OR  
 97013.

Refunds for last years \*Portland Swap Meet  
 Duty will be made at the banquet.

## **BEAVER CHAPTER'S 2020 BANQUET MENU CHOICES AND RESERVATIONS**

**Chicken Monarch - C** - breaded and baked breast of chicken filled with spinach, mozzarella and parmesan, topped with Mornay sauce; accompanied by rice pilaf and seasonal vegetables.

**London Broil - B** - with pinot demi-glaze; accompanied by roasted garlic mashed potatoes and seasonal vegetables.

**Grilled Salmon - S** - finished with lemon butter; accompanied by rice pilaf and seasonal vegetables.

**Vegetable Stir Fry - V** - Vegan and Gluten Free

**Roasted Pork Loin With Cranberry and Orange Glaze - P** - Served with baby red potatoes and seasonal vegetables. Gluten and Dairy Free.

### **2020 Banquet Reservation Form**

Name \_\_\_\_\_ \$ \_\_\_\_\_ \*PSM Club Duty: Yes \_\_\_\_\_ No \_\_\_\_\_

Check entrée choice: S \_\_\_\_\_ B \_\_\_\_\_ C \_\_\_\_\_ V \_\_\_\_\_ P \_\_\_\_\_

Name \_\_\_\_\_ \$ \_\_\_\_\_ \*PSM Club Duty: Yes \_\_\_\_\_ No \_\_\_\_\_

Check entrée choice: S \_\_\_\_\_ B \_\_\_\_\_ C \_\_\_\_\_ V \_\_\_\_\_ P \_\_\_\_\_

It is impossible to live without failing at something,  
 unless you live so cautiously that you might as well not have lived at all.  
 In which case you fail by default. ~ J.K. Rowling

To keep you informed - The following are changes the Board made to the Policies and Procedures last year. You will find them included in the 2020 roster.

## Approved Policies and Procedures

### Charitable Gifts

**Purpose:** To provide a procedure, and schedule, for awarding charitable gifts.

**Policy:** Charitable giving is a budget item voted on by membership at the beginning of the year. Award recipients will be selected by the board from car related member nominations. Written gift nominations need to be turned into the Member At Large prior to the conclusion of the September meeting to receive consideration. The board will make selections, and assign gift amounts, during the October board meeting. Award recipients, and amounts, will be announced at the October membership meeting.

### Annual Past President Tour Attendees

**Purpose:** To provide a car based social venue for the club membership, and to reward those club members who actively support the club by volunteering to work the Portland swap meet.

**Policy:** Any member of the Beaver Chapter who serves at least three consecutive hours of swap meet duty in any capacity (including staffing at a designated station and/or staffing the Swap meet information booth) shall be eligible for monetary compensation for some costs associated with attending this event. Each member who has stood a swap meet duty will be compensated for one night's room rate. This rate will be limited to the lowest rate negotiated for the tour. The Swap Meet chairperson shall submit Swap Meet duty records to the organizer of the Past President's Tour. All members, regardless of swap status, will participate equally in group meals, activities, and planned entrance fees. Other attendees will pay the incurred costs associated with their participation. ALL GUESTS of members shall pay the full cost of their participation and are NOT eligible for gifts or door prizes.



**WANTED:** Have a friend looking for a 30-31 Tudor or Fordor in good condition  
Tom Irwin

### FOR SALE:

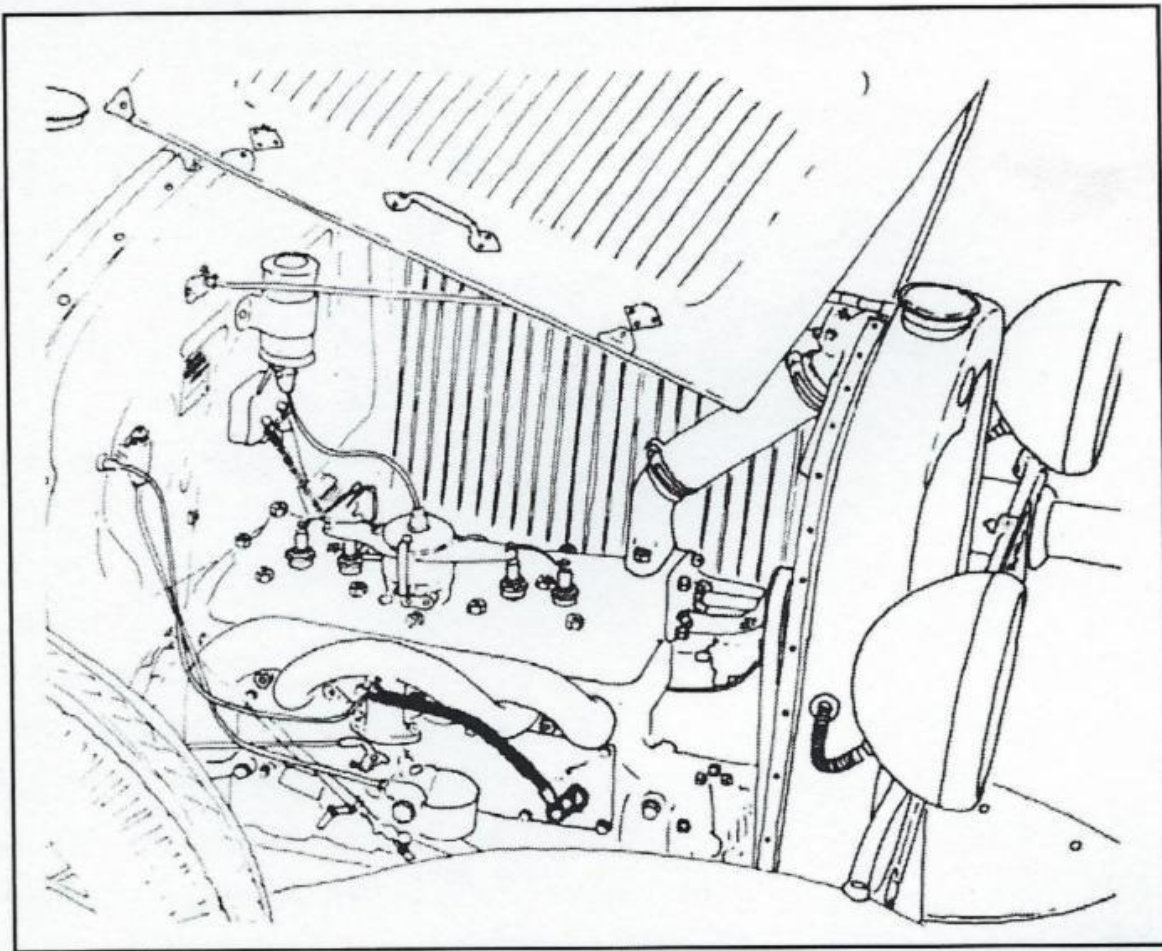
5 each tubes with metal stems, used but good condition, \$15 each;  
2 each 19" black wall tires, good tread, \$25 each; Ford Script brake adjusting tool, \$10;  
2 each 21" mounted tires, fair condition, \$20 each. Tom Irwin 503.538.5227 or irwinc@outlook.com



## CRANKCASE VENTILATOR

I have eliminated my Model A blowby problem and have cleaner oil too! Several years ago, another Model A enthusiast suggested using a tube from the valve side cover plate to the intake manifold to route the fumes from the crankcase. This was good. What I have done is to embellish upon it.

Inside the oil filler cap, I have added a stainless steel pot and pan scrubber (like real coarse steel wool), available at any market. To this I have added a PCV valve (Lee #LV-61) for a 225 C.L.D. Slant Six Valiant engine, which is of fiberglass composition with stainless steel parts.



*Submitted by George-Chris Sprotte, Simi Valley, CA*

*Happy New Year*



## Welcome to the North Pole

The Christmas Potluck on December 7th was a huge success thanks to Lory Symank who picked the theme The Polar Express. Everyone worked hard on the word search game. Right is Lori and Stan Symank, and Penny Height; below is Cheryl Witkowski and grandkids; and also Rene and Kirk Metteer.



Everyone had their fill at the buffet line with so many choices to make. There was even a hot chocolate bar to keep us warm.

Lori has planned the potluck for ten years and said she will step down to let someone else plan next years potluck. Thanks Lori for all your hard work!

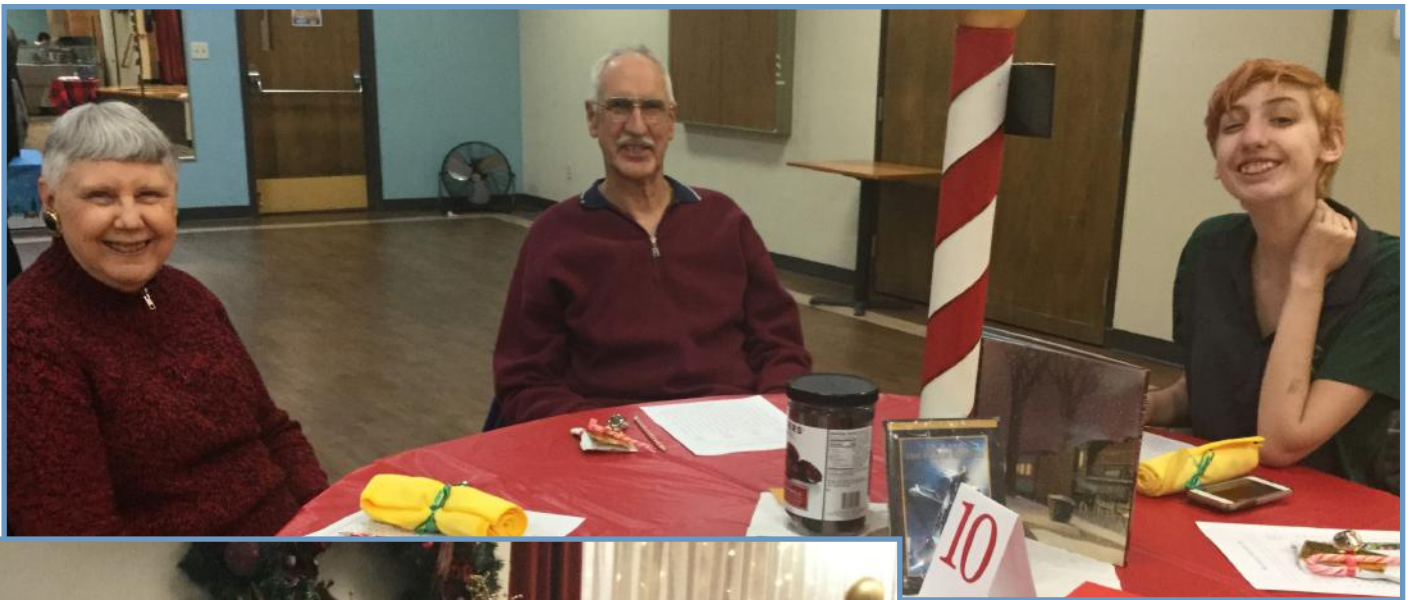
Prizes for the evening were train whistles, the book *The Polar Express*, the DVD *The Polar Express*, jars of chocolate caramels, five Polar Express trains sets, a Pendleton blanket, and a bottle of whiskey.



Brenda Caseday had her hands full with grandchildren including her latest who was five weeks old!

If you weren't one of the lucky prize winners, there were favors at each table so no one went home empty handed! There were over sixty people who attended the potluck.





Pictured above is Judy and Curtis Meade and their granddaughter.



The Adair's granddaughter Ailee Pardi entertained us playing Christmas songs on her fiddle.

And the Photo Contest display gathered lots of attention as members voted for their favorite photo entry. The winning photographer will be announce at the January banquet. There was some good competition!





# JANUARY

## CALENDAR OF EVENTS

**Beaver Chapter Board Meeting** will be meeting two different nights - first Wednesday January 8th at 6PM at Bob's Red Mill Corp. office at 13521 SE Pheasant Ct., Milwaukie 97222 (not the retail location.) And Wednesday, January 15th at 6PM at Clackamas Community Center, 15711 SE 90th, Clackamas, OR. On the same evening is the **Beaver Chapter Membership Meeting**. Social and refreshments start at 7PM, followed by the meeting at 7:30PM.



The January club meeting is a busy one! First of all you will want to sign up for a **Portland Swap Meet Duty**. Remember, this is how our club earns it's income so we have enough money to do all the fun and interesting things we do throughout the year. Secondly, you know all those red tickets you've been saving from last year - It's time to bring them for the **Red Tire Ticket Drawing**. You might be a lucky winner of \$50, \$100, or the big winner of \$600 towards the purchase of new Model A tires!! So bring your red tickets! And finally, if you haven't renewed your membership before December 31st, you're late and it will cost you an extra \$5.



Speaking of the January meeting...

**NO ONE HAS SIGNED UP TO BRING REFRESHMENTS!  
IF YOU DON'T SIGN UP WE WON'T HAVE ANY!!!**

Mary McConnell coordinates the signup list and she needs 6 more months filled this year, including the January Meeting. Consider this your "kick in the butt" notice and please give her a call to signup. Her number is 503.656.8648. If you've never brought refreshments before here's some information: Plan on serving about 70 people, the club will reimburse you for the costs - just save your receipts and submit them to the Treasurer; favorite snacks are things like cookies, meat, cheese & crackers, veggies, fresh fruit, ice cream bars, etc. You'll need to make coffee & water for tea but cold beverages are brought by Ted Downs. Coffee, tea, creamer & sugar, napkins, plates and utensils are available in the cupboard. Mary can answer any question you may have. Thanks in advance for your help!

**Beaver Chapter Annual Banquet** is Saturday, January 18th at 6-10PM. Sign up by January 11th. See page 7 for registration and details.



HAPPY  
NEW  
YEAR!

How Long Does It Take You To Solve This Puzzle?  
Ford Related Words

M	F	H	P	L	K	R	A	P	S
A	D	E	M	A	F	C	A	O	C
T	R	M	U	E	P	S	A	T	O
U	O	U	S	N	G	L	E	U	H
N	F	G	T	G	K	U	N	D	N
A	S	P	A	I	H	E	O	O	R
D	D	U	N	N	H	E	N	R	Y
E	F	L	G	E	N	G	R	A	T
S	A	G	E	P	U	O	C	R	M

Beginning Time:

Ending Time:

Rouge, Ford, MUSTANG, HENRY, COUPE, TUDOR,  
MAFCA, ENGINE, SEDAN, GAS, SPARK, PLUG

Shirley Strutt	1 <sup>st</sup>
Leroy Benham	2 <sup>nd</sup>
Yvonne Jeffords	3 <sup>rd</sup>
Elaine Thornes	7 <sup>th</sup>
Chrystal Ross	10 <sup>th</sup>
Nurry Scott	12 <sup>th</sup>
Arnold Jeffords	14 <sup>th</sup>
Beverly Asbahr	17 <sup>th</sup>
Bill Call	17 <sup>th</sup>
Denis Schelske	23 <sup>rd</sup>
Rey Reece	25 <sup>th</sup>
James Ross	28 <sup>th</sup>
Michael Blick	29 <sup>th</sup>
Dave Gallant	30 <sup>th</sup>
Mary Corah	31 <sup>st</sup>
Tom Boyko	31 <sup>st</sup>