

NEW

Butterick

FASHIONS



*For further description
of this pattern
see page 16*

Jacket 3176
Frock 3182
Bag 3131

MAY

COMPLIMENTS OF

1930

Meier & Frank Co.
"PORTLAND'S OWN STORE"

A MEIER & FRANK Fashion Fabric Advisor will be glad to help you plan a distinctive wardrobe.

The New Silhouette in the Evening



BUTTERICK PATTERNS
ARE FIRST IN STYLE
IMPORTANCE AND FIRST
IN SERVICE TO YOU



Cape 3186
Frock 3144

3144

3147



Ensemble 3175

3186—This cape may be made with or without flared flounce in either of two depths. Size 36, 27½ yds. 39-in. rayon satin, with 25½ yds. crêpe de Chine 39 for lining. In 32, 36 (sizes 14 and 18) 40 and 44 bust. Price, 50 Cents.

3144—Frock with gathered skirt and separate one-piece slip. Size 34, 6½ yds. 72-in. tulle (2 layers), with 3½ yds. 9-in. ribbon; slip. (cut crosswise) 1¾ yds. silk crêpe 39. In 32 to 38 bust (sizes 14 to 20). Price, 50 Cents.

3175—Evening ensemble. Size 36, (flounces cut crosswise), for ensemble, 7½ yards of 39-inch sheer crêpe; for frock of printed chiffon, 5¾ yards 39 inches wide. In 32 to 36 (sizes 14 to 18) and 38 to 44 bust. Price, 50 Cents.

3147—This unusual frock has crossed bands and sectional flares in one. Closed at center back. The body is bloused and there is a separate one-piece slip. Size 36, 6½ yds. 39-in. Georgette. In 34 to 44 bust. Price, 50 Cents.

NEW

Butterick

FASHIONS



3179—A frock in princess style with inserted godets at front and back. For 36, 4½ yds. printed silk 39. In 32 to 36 (sizes 14 to 18) and 38 to 44 bust. Price, 50 Cents.

3149—Frock with attached skirt having a two-piece flare. Sleeve in cap, three-quarter or wrist length. Size 36, 3¾ yds. silk crêpe 39. In 34 to 44 bust. Price, 50 Cents.

PRICES OF PATTERNS IN STERLING

Pattern Marked	British Isles	Australia	New Zealand
25c	1/-	1/3	1/-
30c	1/3	1/4	1/3
35c	1/6	1/4	1/4
40c	2/6	1/2	1/2
45c	3/-	2/-	2/-
50c	3/-	2/6	2/6
75c	3/-	3/6	3/-

DELINEATOR | NOW
 America's Smartest Magazine | 10c
GET YOUR COPY TODAY

3176—Jacket with or without shoulder capelet. 3182—Two-piece shirtwaist frock having a tuck-in or overblouse and skirt with sectional flares at front. Both in 32 to 36 (sizes 14 to 18) and 38 to 44 bust. 3131—Bag. One size. For 36, 3½ yds. 54-in. tweed, with 1½ yds. crêpe de Chine 39; for bag, ¾ yd. 35 or more. Jacket, 40 Cts.; Frock, 45 Cts.; Bag, 35 Cts.

BUTTERICK

SUMMER
QUARTERLY
1930

PRICE 25 CENTS
BY MAIL 40 CENTS EXTRA



THE
MAGAZINE
OF
FASHION

PARIS
DESIGNS
THE NEW
COLORS
NEWEST
TRANSFERS

3144

3085 SEE BUTTERICK PAGE 28



3151
Bag 3131

3157

3135



3151 3157 3135 3153 3163 3068

SHIRTWAIST FROCKS
ARE EASY TO MAKE
WHEN YOU FOLLOW
THE
NEW DELTOR

3151—Jacket frock. In 32 to 36 (sizes 14 to 18) and 38 to 44 bust. 3131—Bag. One size. Size 36, (skirt cut crosswise) 6 yds. striped silk shirting 32; bag, $\frac{3}{4}$ yd. 35. Frock, 50 Cts.; Bag, 35 Cts.

3135—Frock with attached two-piece bias or straight flared skirt. Size 36, (skirt cut bias) $3\frac{1}{2}$ yards 32-inch striped silk shirting. In 32 to 36 (sizes 14 to 18) and 38 to 48 bust. Price, 45 Cts.

3163—Jacket with or without scarf collar or sleeves. 3068—Frock with skirt having inverted plaits at front and each side of back. Size 36, jacket 2 yards light weight wool 54; frock $3\frac{1}{2}$ yards silk crêpe 39. Both in 32 to 36 (sizes 14 to 18) and 38 to 44 bust. Jacket, 35 Cents; Frock, 45 Cents.

3157—Two-piece shirtwaist frock; tuck-in blouse and four-piece skirt attached to yoke. Size 36, $3\frac{3}{4}$ yards of 35-inch cotton pique. In 32 to 38 (sizes 14 to 20) and 40 to 44 bust. Price, 45 Cts.

3153—A chic wool frock. In 32 to 38 (sizes 14 to 20) and 40 to 44 bust. 3131—Bag. One size. For 36, frock $2\frac{3}{4}$ yards 54, with $\frac{1}{2}$ yard 32; bag $\frac{3}{8}$ yard 27 or more. Frock, 45 Cts.; Bag, 35 Cts.



3153
Bag 3131

Jacket 3163
Frock 3068

All Sizes Are Exact in Butterick Patterns



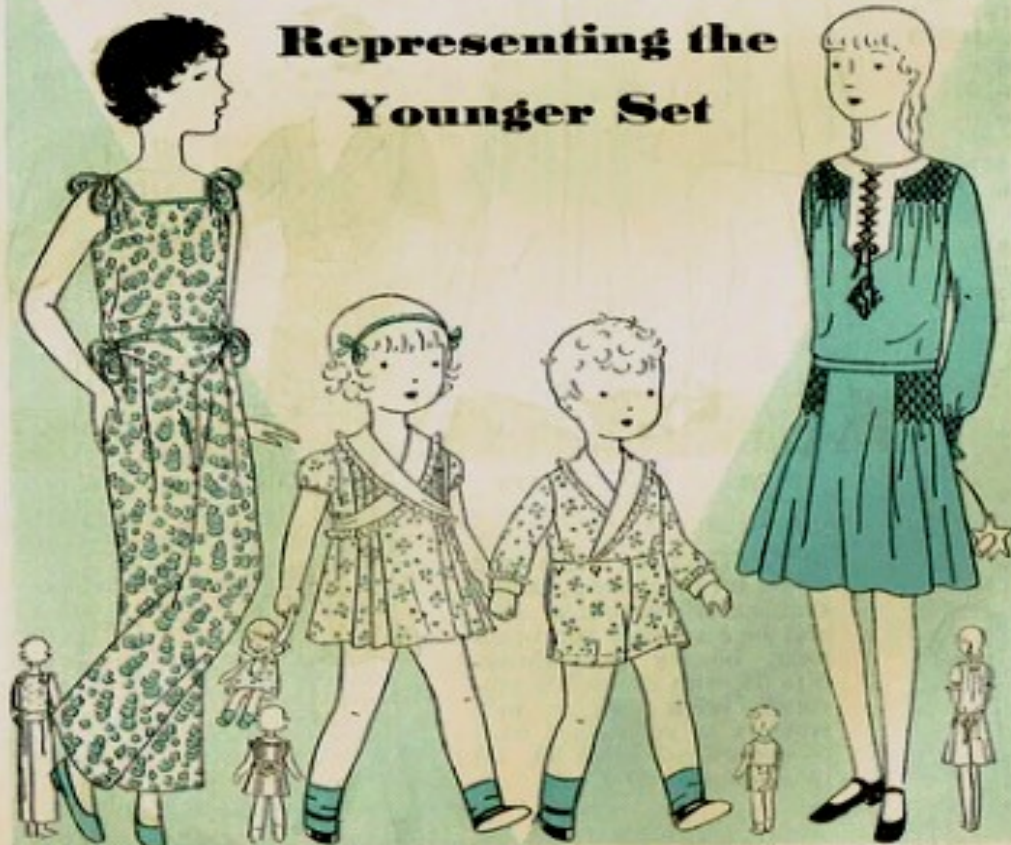
3160

3152

3162

Ensemble 3169
Hat 2240

Representing the Younger Set



3156

3134

3150

Frock 3146
Transfer 10309

3160 3152 3162 3169

3160 — Yoke frock and French panties. Size 23, 1 $\frac{3}{4}$ yds. cotton voile 39, with $\frac{1}{2}$ yd. contrast 27 to 39. 20 to 24 breast (sizes 1 to 6). 25 Cents.

3152—One-piece frock with inverted plaits. Size 30, 3 $\frac{1}{4}$ yds. 35-in. printed lawn, with $\frac{3}{8}$ yd. plain 27 or more. 24 to 32 breast (sizes 6 to 14). 35 Cts.

3162 — Frock with gathered skirt attached low. For 25, 1 $\frac{3}{8}$ yds. 35, with 5 $\frac{1}{2}$ yds. bias fold tape. 24 to 28 breast (sizes 6 to 10). 35 Cents.

3169 — Jacket frock. For 26, 2 $\frac{1}{4}$ yds. 39, with $\frac{3}{4}$ yd. 39 for body. 23 to 28 breast (sizes 4 to 10). 35 Cts. 2240—Hat, 19 to 21 $\frac{1}{4}$ head. 25 Cts.

3146—One-piece frock and design for smocking. Size 30, 2 $\frac{3}{4}$ yards 39. In 26 to 33 breast (sizes 8 to 15). 35 Cts.; Trans., 30 Cts.

3150—A suit to match sister's frock. Size 22, 1 $\frac{1}{2}$ yds. printed linen 35, with $\frac{3}{4}$ yd. organdie 32. In 21 to 23 $\frac{1}{2}$ breast (sizes 2 to 5). Price, 30 Cents.

3134—Frock and separate French panties. For 23, 2 $\frac{1}{4}$ yds. printed linen 35, with 1 $\frac{1}{8}$ yds. organdie 27 or more. 20 to 24 breast (sizes 1 to 6). 30 Cts.

3156—Two-piece pajamas. Size 30, 3 $\frac{1}{4}$ yds. 32-in. printed cotton crêpe, with $\frac{3}{8}$ yd. 32-in. contrast. In 23 to 33 breast (sizes 4 to 15). Price, 25 Cts.